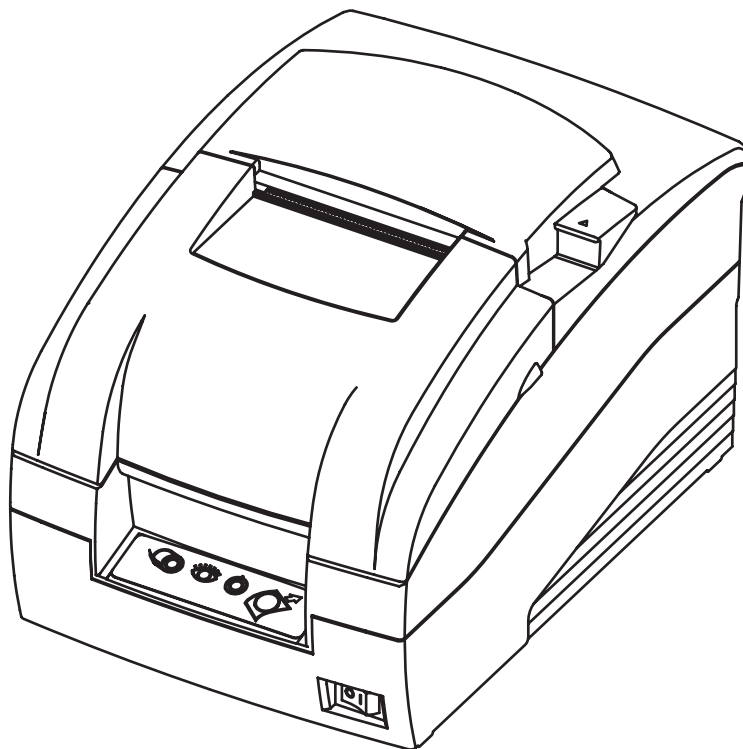




Windows x64 Driver Manual

SRP-275 Ver.2

Impact Printer
Rev. 2.01



<http://www.bixolon.com>

■ Table of Contents

1. Manual Information.....	3
2. Operating System (Windows x64 OS) Environment	3
3. Windows Driver Preparation	3
4. Windows Driver Installation	4
4-1 Installing on Windows XP/2003 Server.....	4
4-1-1 Via Serial Port or Parallel.....	4
4-1-2 Via USB Port	8
4-2 Installing on Windows VISTA/2008 Server/7.....	15
4-2-1 Via Serial Port or Parallel.....	15
4-2-2 Via USB Port	19
5. Detailed Windows Driver Settings.....	23
5-1 Paper Supply Method	23
5-2 Paper Size	25
5-3 Additional Commands.....	26
6. Windows Driver Specifications.....	28
6-1 Fonts.....	28
6-2 Special Functions	29
7. Use of Windows Driver	30
7-1 Use of Visual Basic.....	30
7-1-1 Windows Driver Selection.....	30
7-1-2 Test Printing.....	30
7-2 Use of Wordpad.....	31
7-2-1 Wordpad Environment Settings	31
7-2-2 Text Printing.....	31

1. Manual Information

This Windows x64 Driver Installation Manual provides information on installation, detailed specifications, and usage of the printer's Windows x64 Driver according to PC operating system (Windows x64 OS).

We at BIXOLON maintain ongoing efforts to enhance and upgrade the functions and quality of all our products. In following, product specifications and/or user manual content may be changed without prior notice.

2. Operating System (Windows x64 OS) Environment

The following operating systems are supported for usage.

- Microsoft Windows XP (64bit)
- Microsoft Windows 2003 Server (64bit)
- Microsoft Windows VISTA (64bit)
- Microsoft Windows 2008 Server (64bit)
- Microsoft Windows 7 (64bit)

3. Windows Driver Preparation

The Windows Driver is included in the enclosed CD, and Latest file versions can be downloaded from the BIXOLON website.

(www.bixolon.com)

If downloading from the BIXOLON website, first download the SRP-275_Vx.x.xx_Windowsx64.zip file, then unzip the file, and run the SRP-275_Vx.x.xx_x64.exe file.

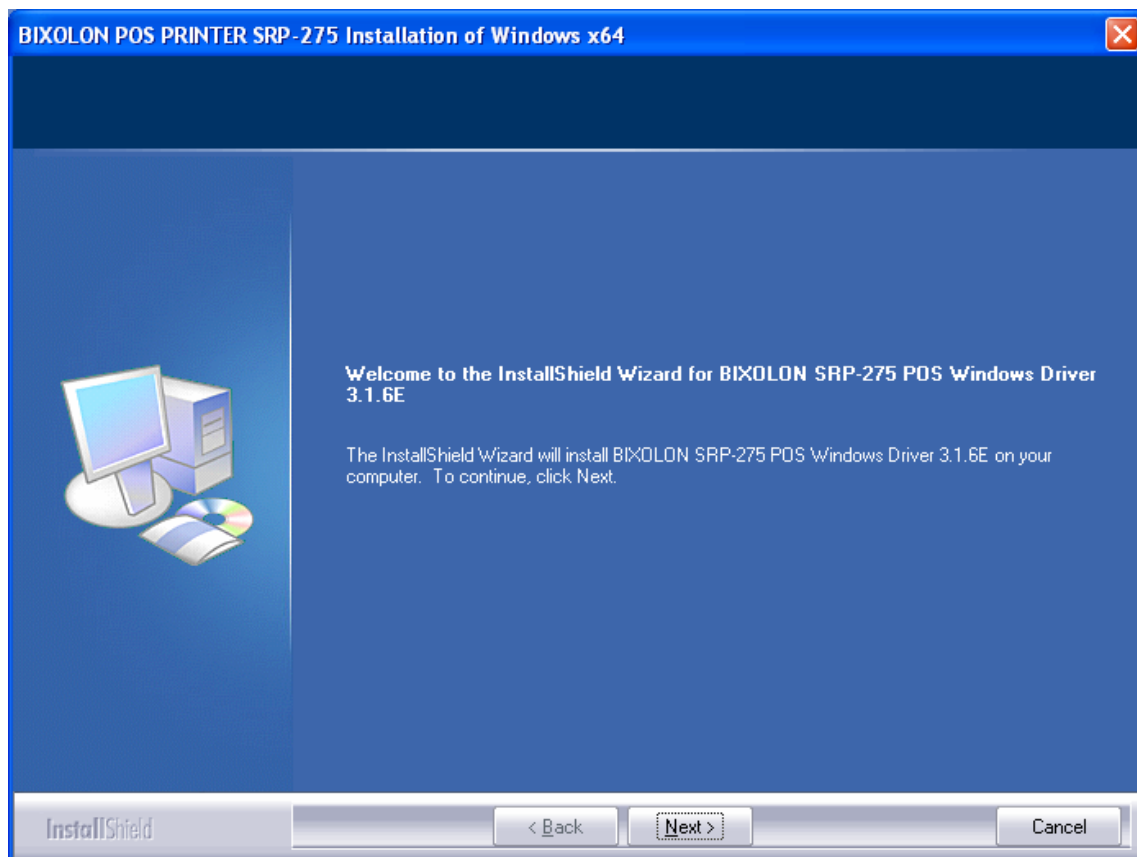
If using the enclosed CD, click the "Windows Driver" button to find and run the Windows Driver installation file (SRP-275_Vx.x.xx_x64.exe).

4. Windows Driver Installation

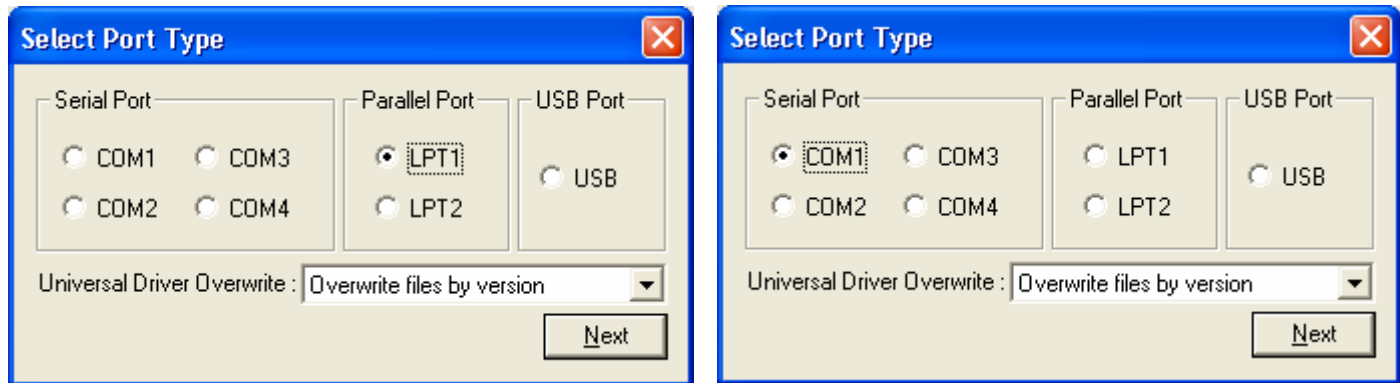
4-1 Installing on Windows XP/2003 Server

4-1-1 Via Serial Port or Parallel

- 1) Double-click the Windows Driver installation file (SRP-275_Vx.x.xx.exe).
- 2) Click the “Next” button.



3) Select the COM or Parallel port to be used and click the “Next” button.



4) When the following message box appears, click the “Continue Anyway” button.



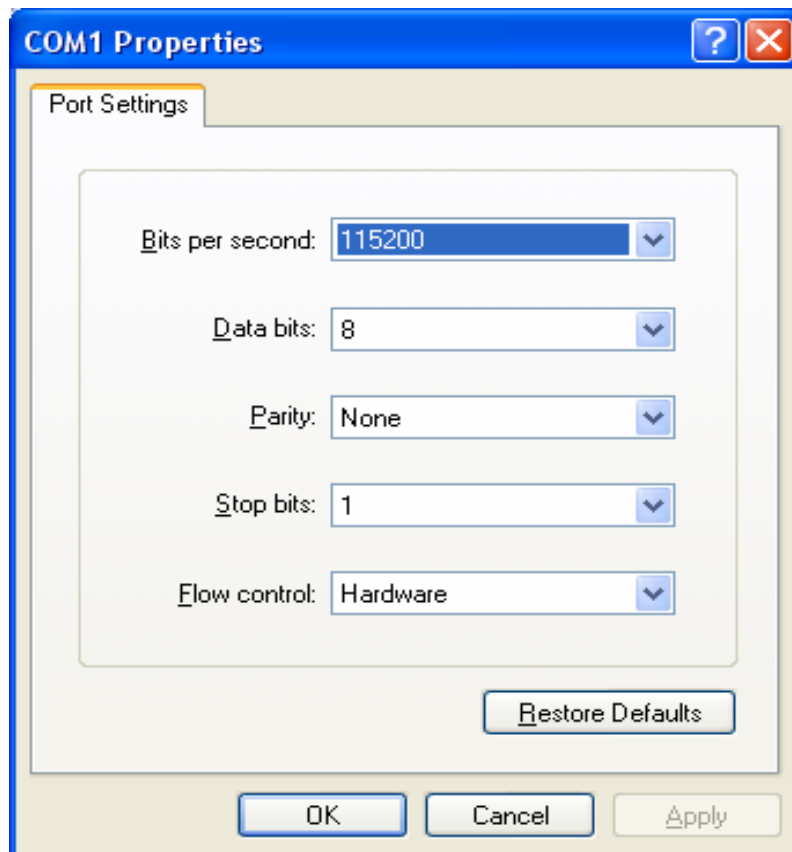
5) Clicking the "Yes" button will reboot the PC.



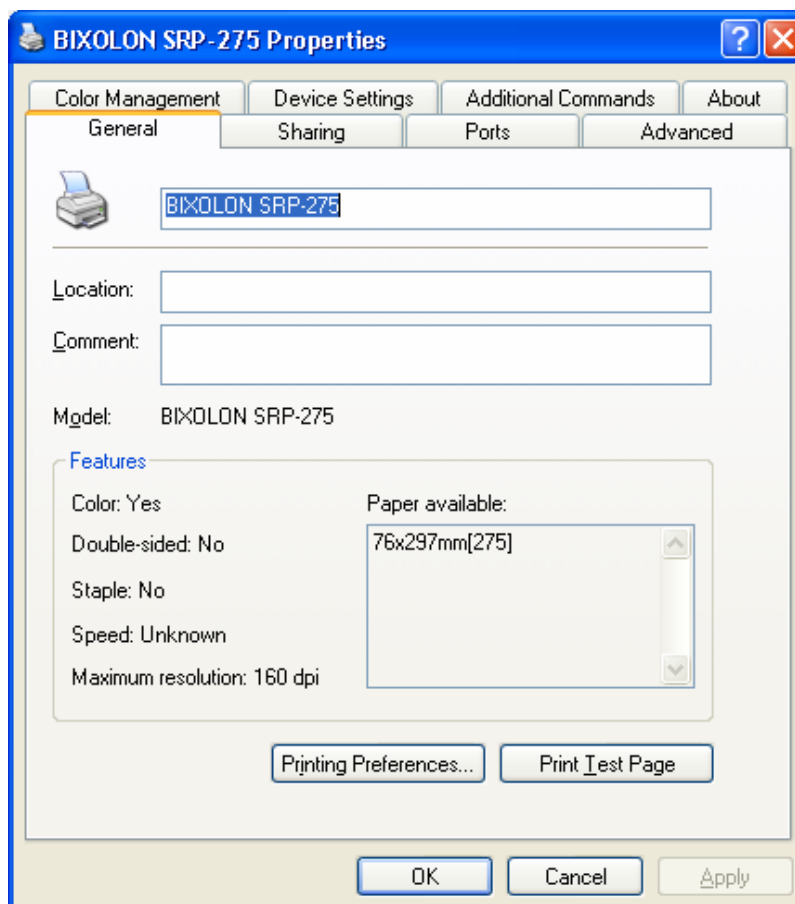
6) Open the printer properties window in the Windows OS.

7) Click the "Port Settings" button in the "Ports" tab.

- 8) Match the communication settings to those of the printer.
(The communication settings of the printer can be performed by conducting a self-test.)

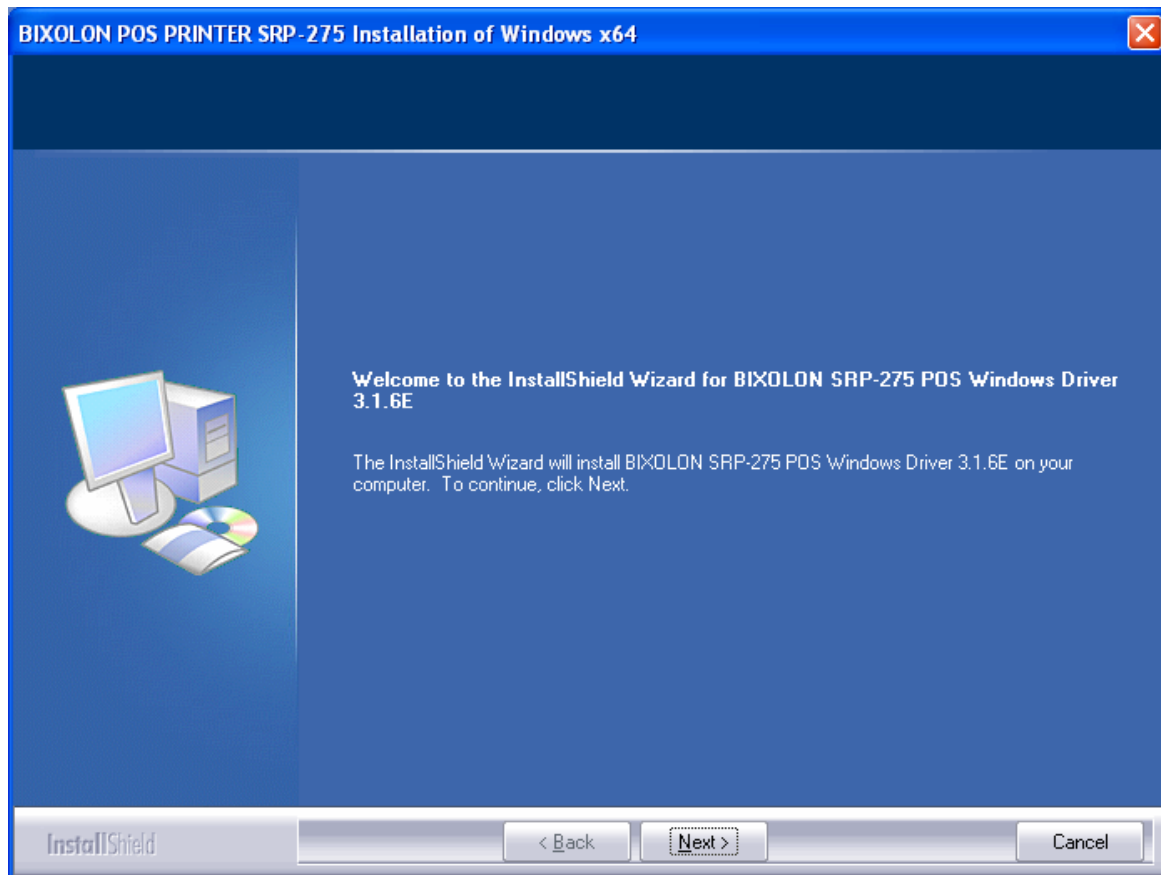


- 9) Click the “Print Test Page” button and check printing status.

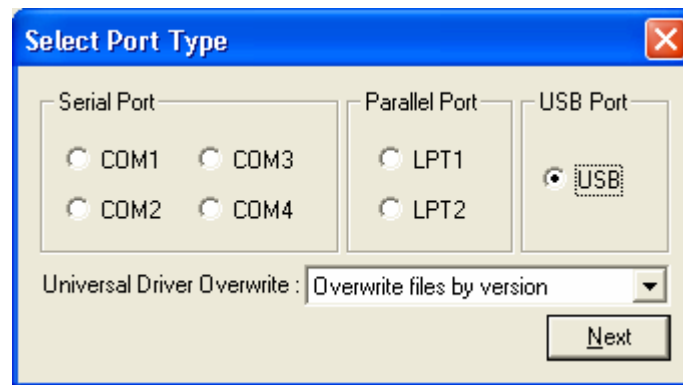


4-1-2 Via USB Port

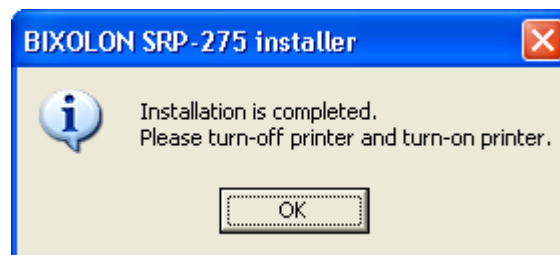
- 1) Double-click the Windows Driver installation file (SRP-275_Vx.x.xx.exe).
- 2) Click the “Next” button.



3) Select USB and click the "Next" button.



4) Click the "OK" button.

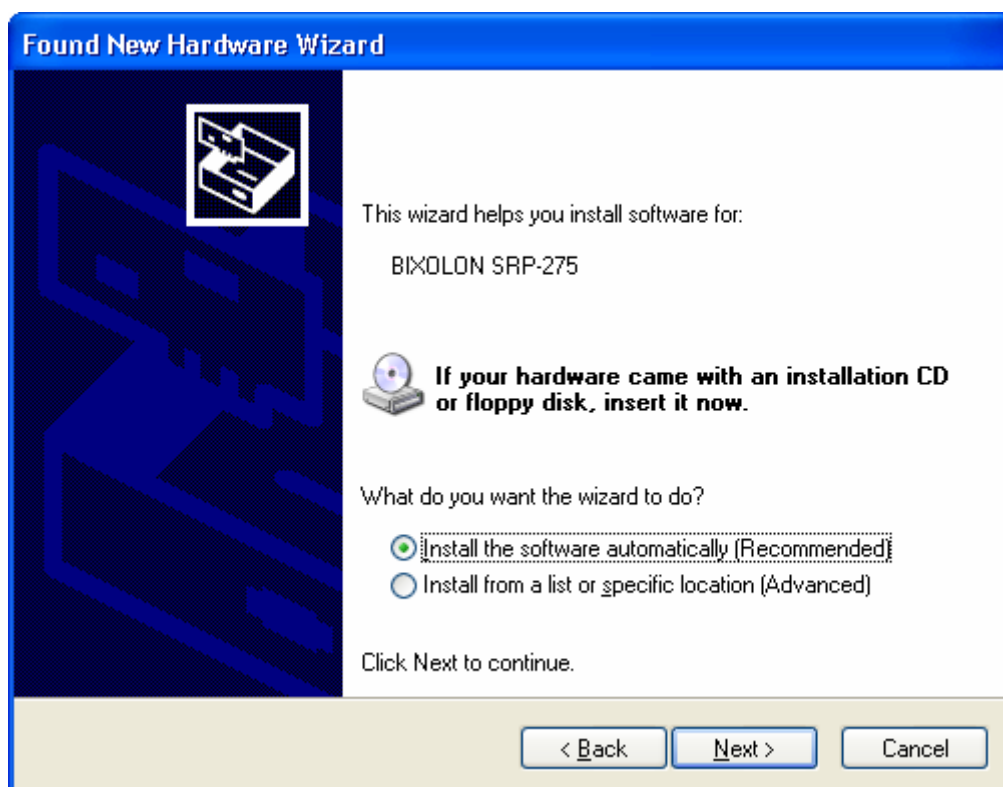


5) Turn on the printer.

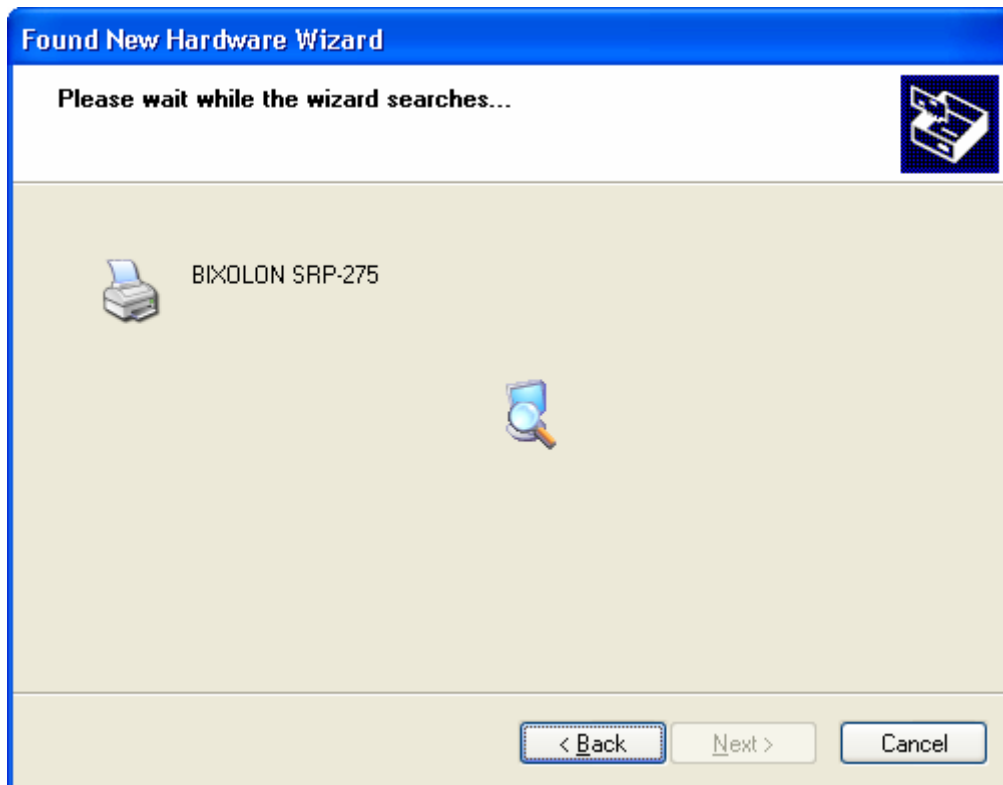
- 6) When the New Hardware Wizard appears for the installation of the Windows Driver, select the option as shown below and click the “Next” button.



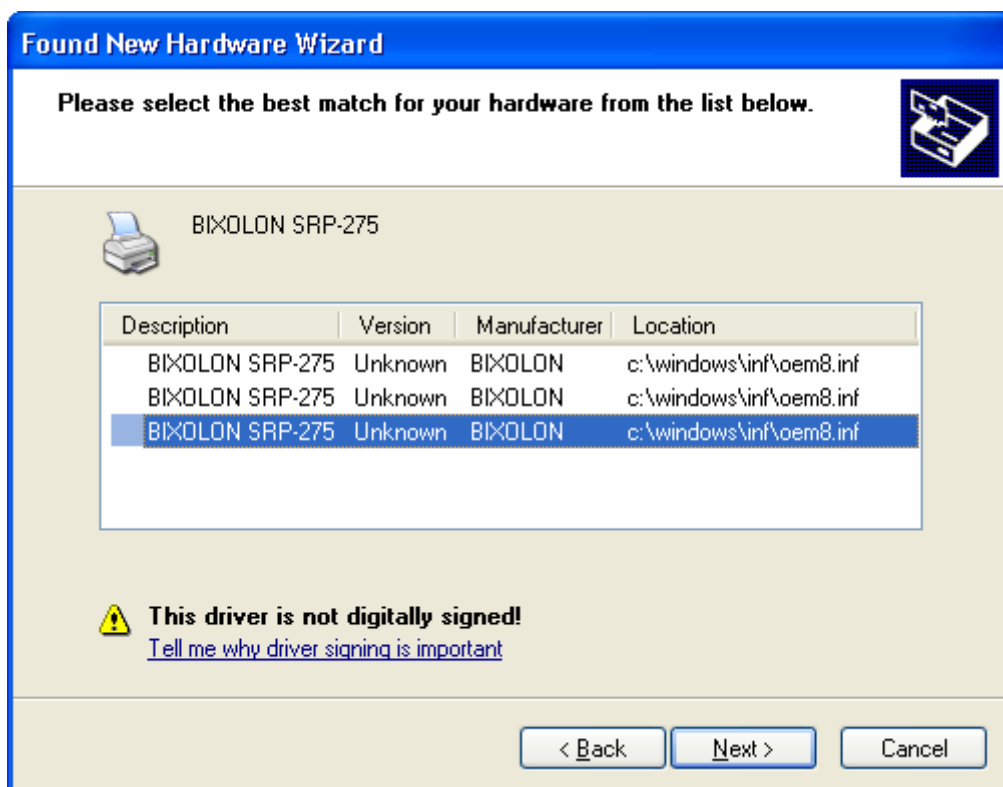
- 7) Click the “Next” button.



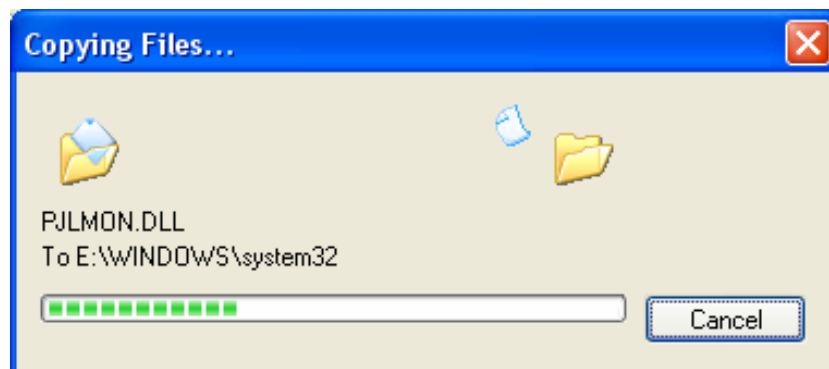
8) Click the “Next” button.



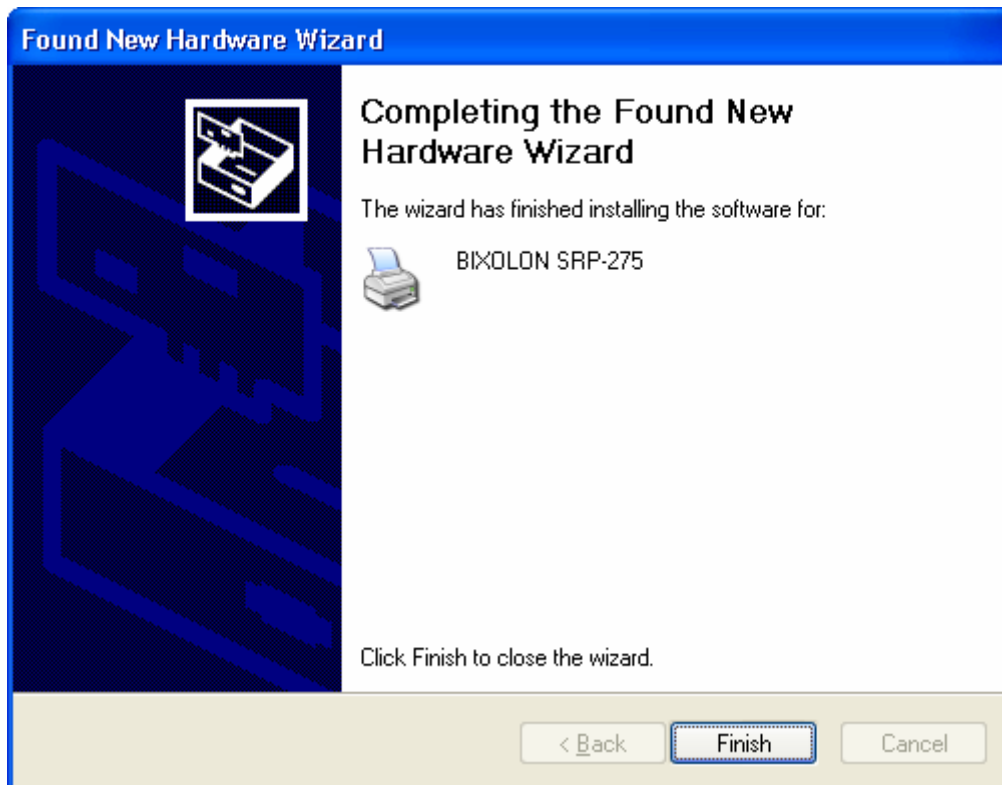
9) Click the “Next” button.



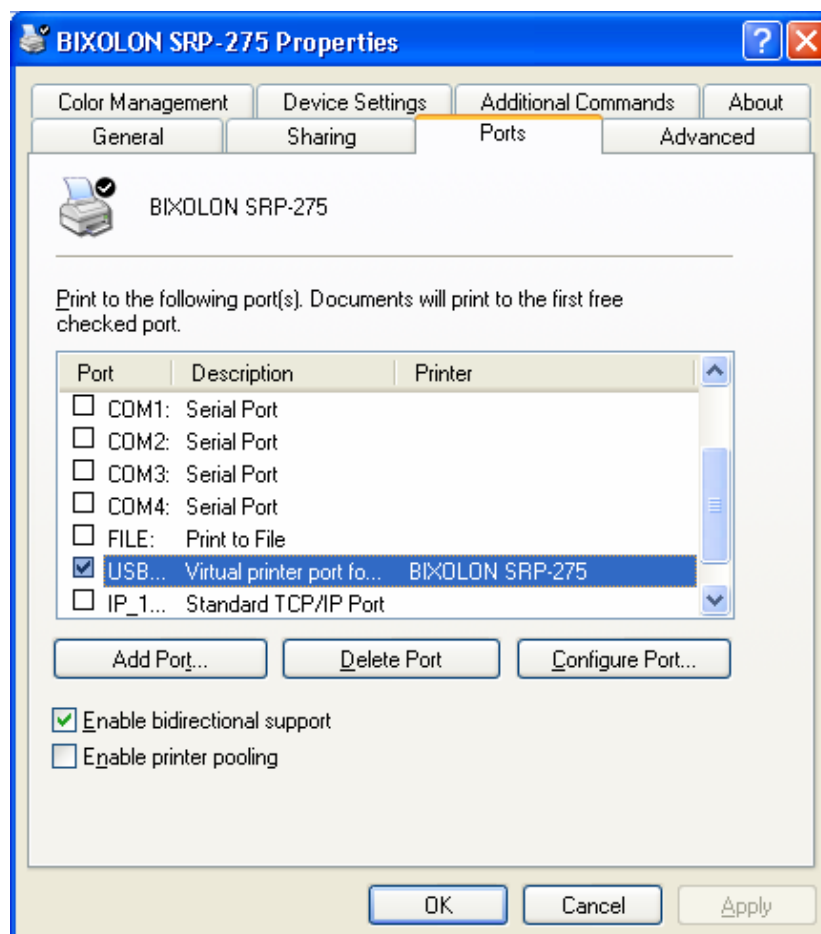
10) Click the "Continue Anyway" button.



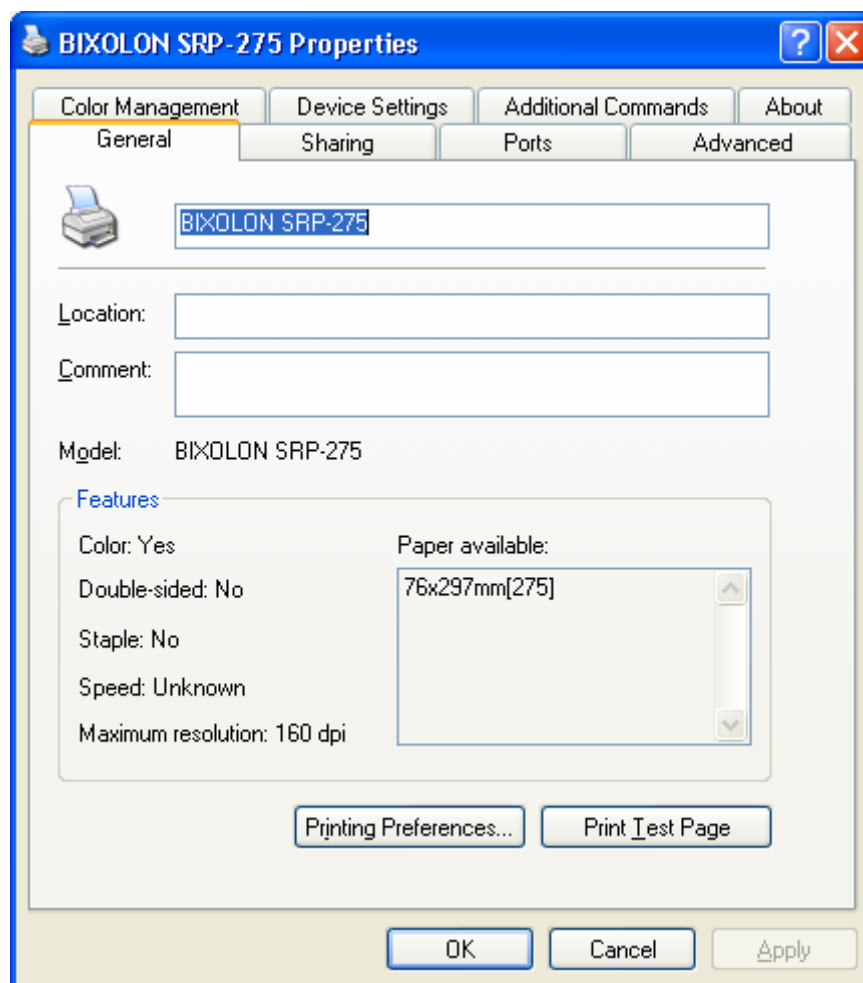
11) Click the “Finish” button.



12) The USB Port setting can be confirmed in the Windows Driver properties.

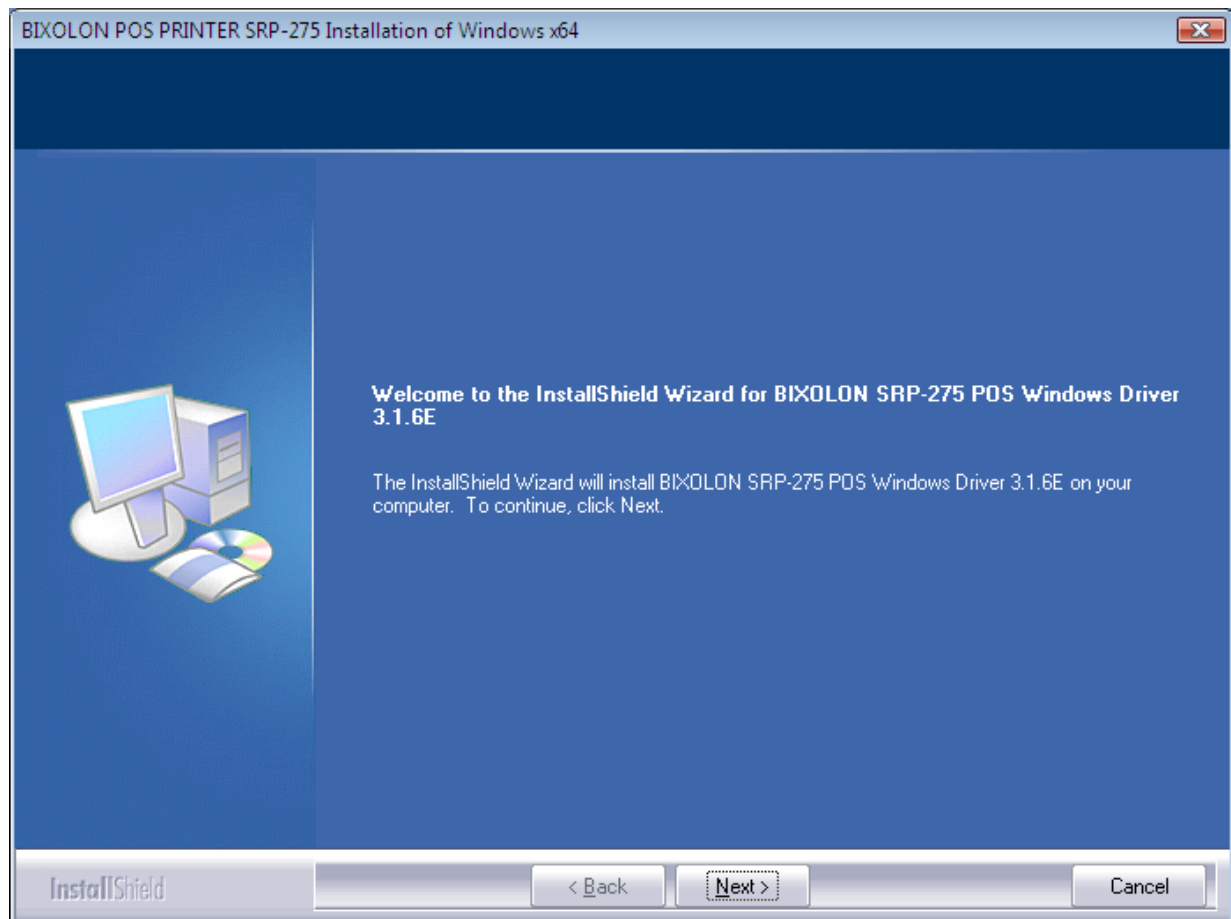


13) Click the “Print Test Page” button and check printing status.

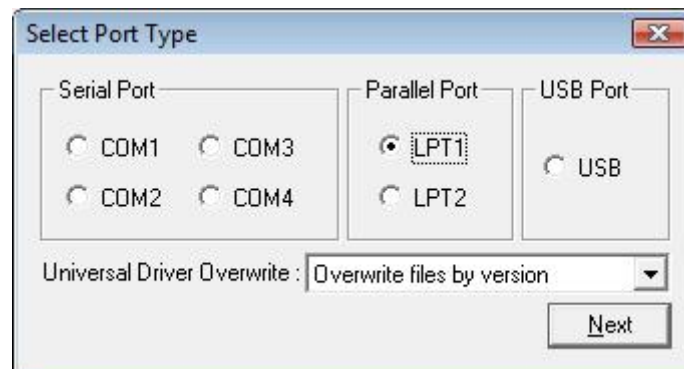
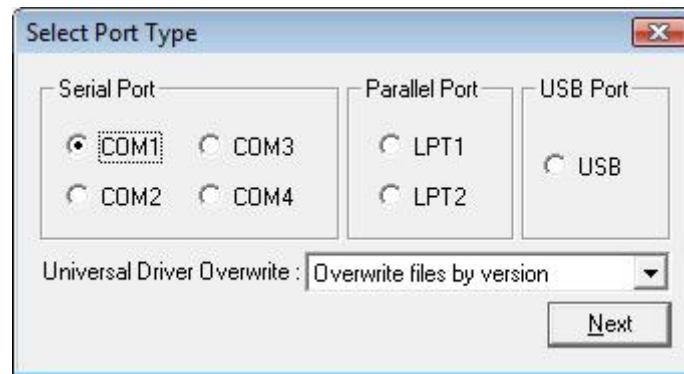


4-2 Installing on Windows VISTA/2008 Server/7**4-2-1 Via Serial Port or Parallel**

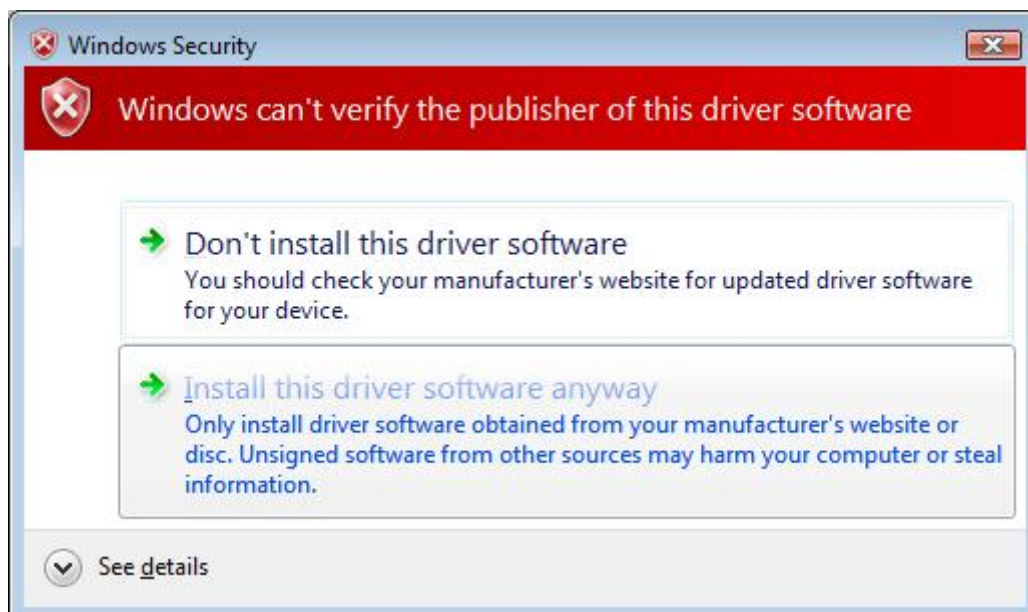
- 1) Double-click the Windows Driver installation file (SRP-275_Vx.x.xx.exe).
- 2) Click the “Next” button.



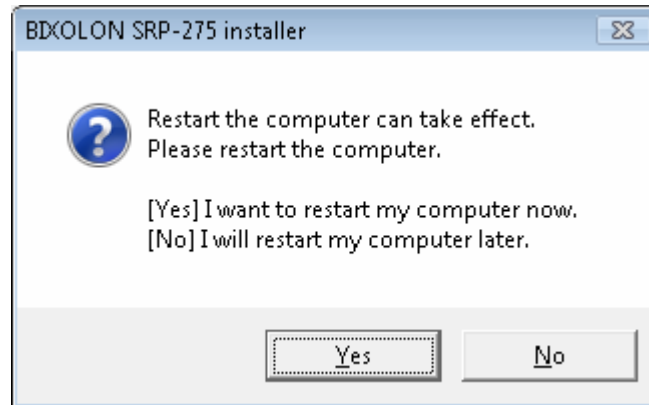
3) Select the COM or Parallel port to be used and click the “Next” button.



4) When the following message box appears, click the “Continue Anyway” button.



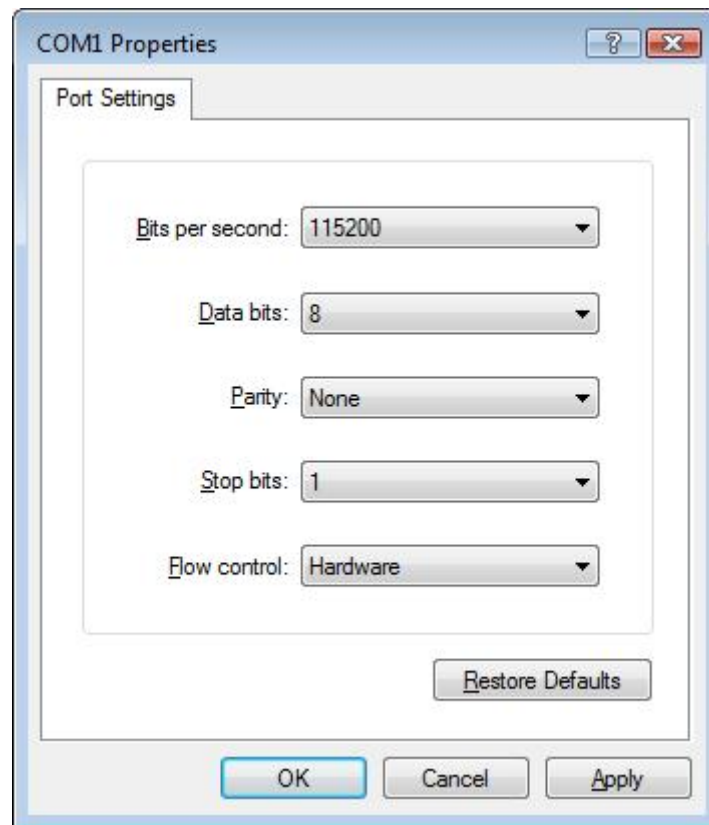
5) Clicking the "Yes" button will reboot the PC.



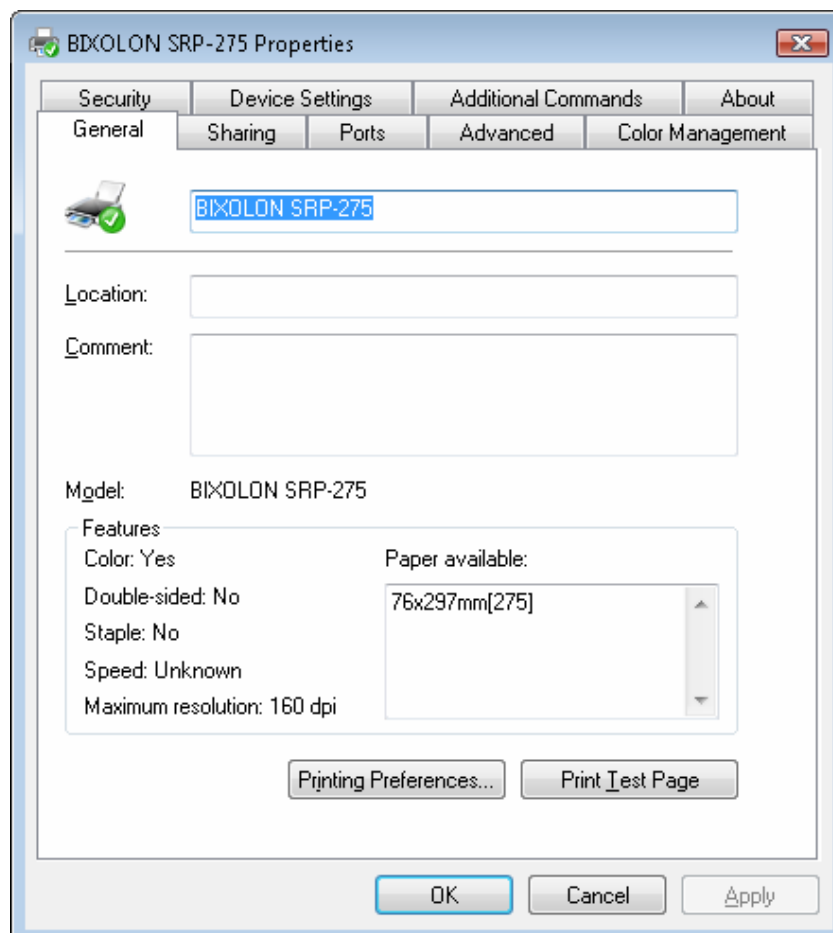
6) Open the printer properties window in the Windows OS.

7) Click the "Port Settings" button in the "Ports" tab.

- 8) Match the communication settings to those of the printer.
(The communication settings of the printer can be performed by conducting a self-test.)

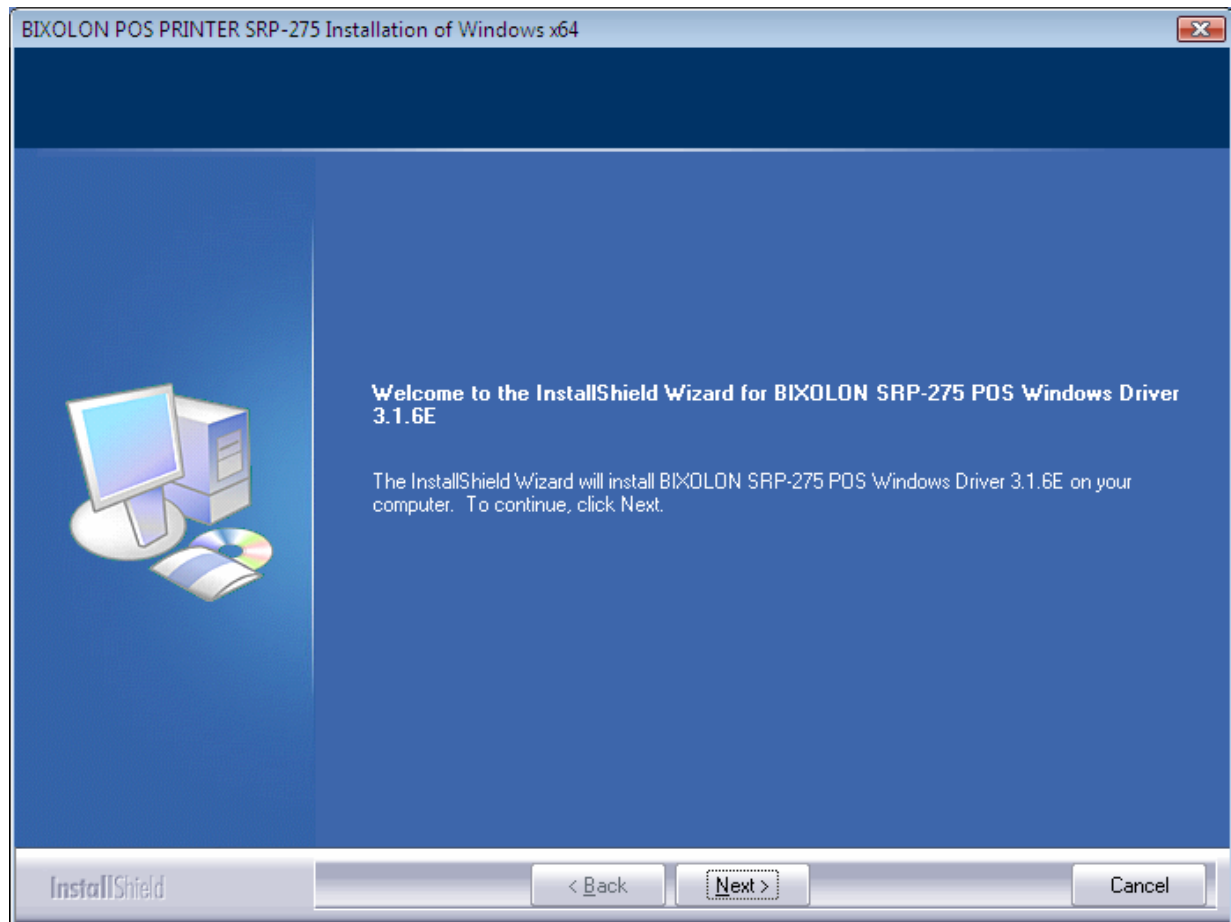


- 9) Click the "Print Test Page" button and check printing status.

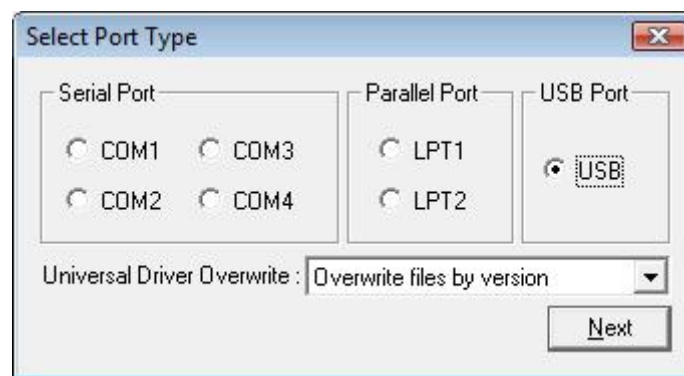


4-2-2 Via USB Port

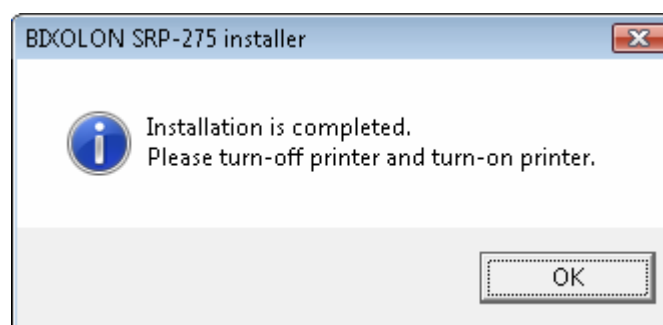
- 1) Double-click the Windows Driver installation file (SRP-275_Vx.x.xx.exe).
- 2) Click the “Next” button.



3) Select USB and click the "Next" button.

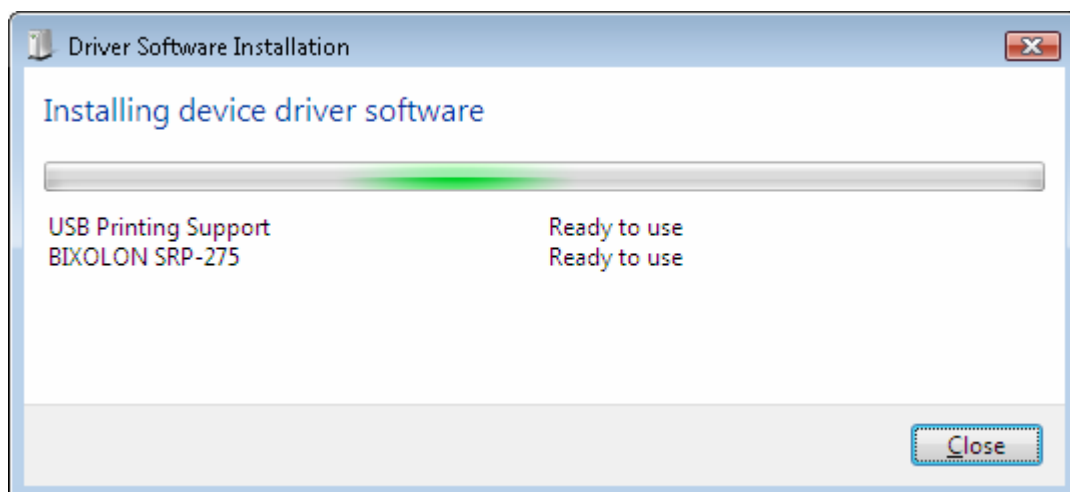
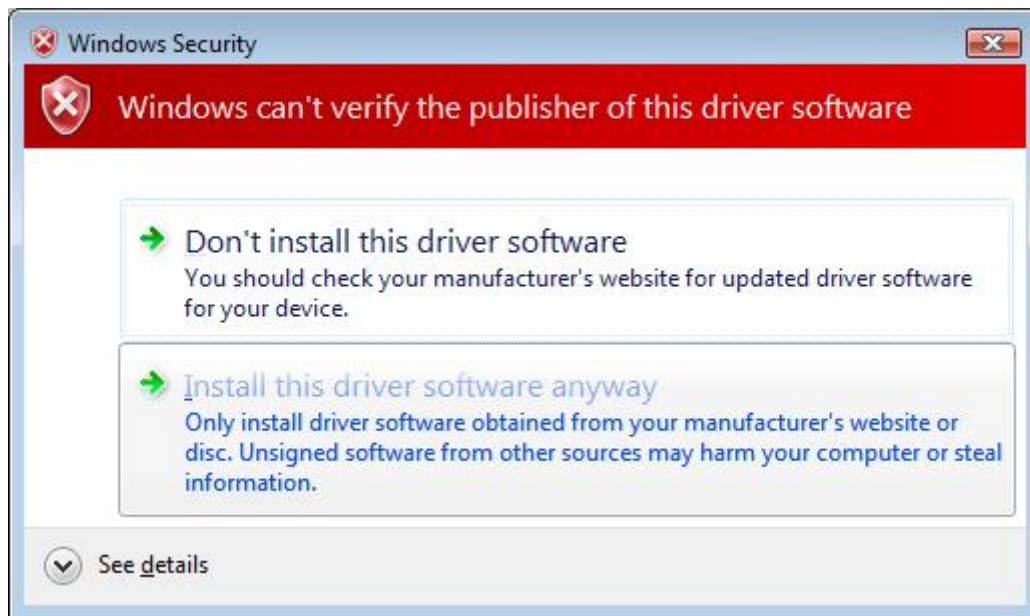


4) Click the "OK" button.

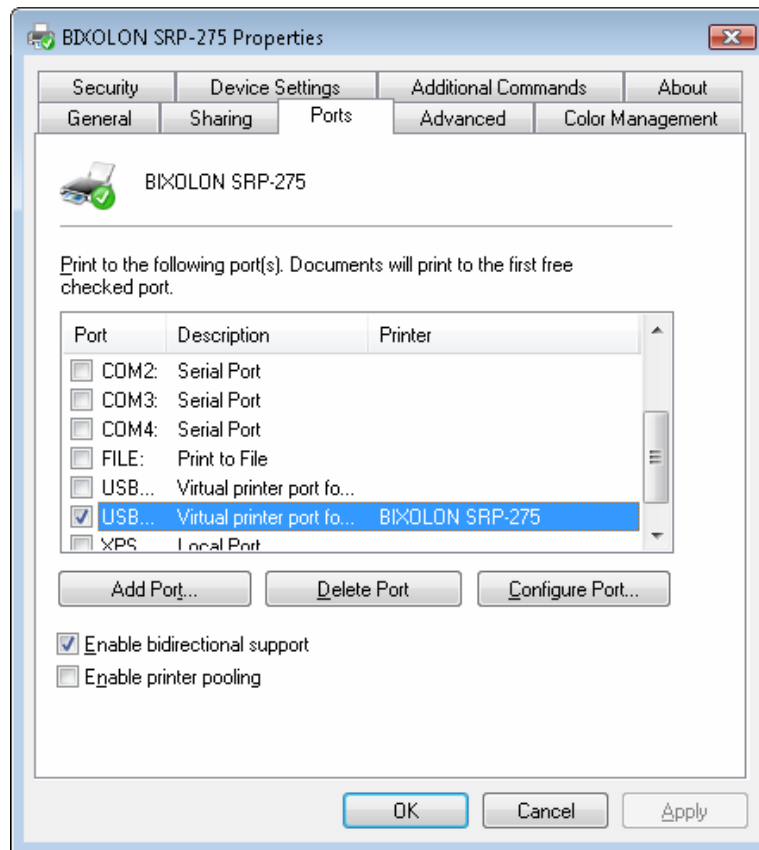


5) Turn on the printer.

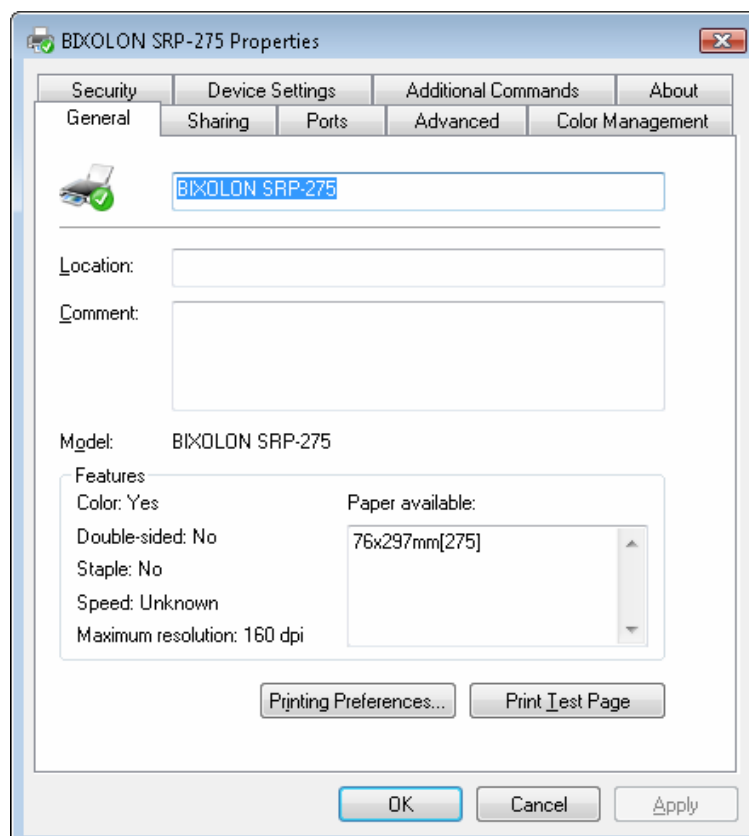
6) Click the “Continue Anyway” button.



7) The USB Port setting can be confirmed in the Windows Driver properties.



8) Click the "Print Test Page" button and check printing status.



5. Detailed Windows Driver Settings

The following functions can be set in detail after the Windows Driver installation is complete.

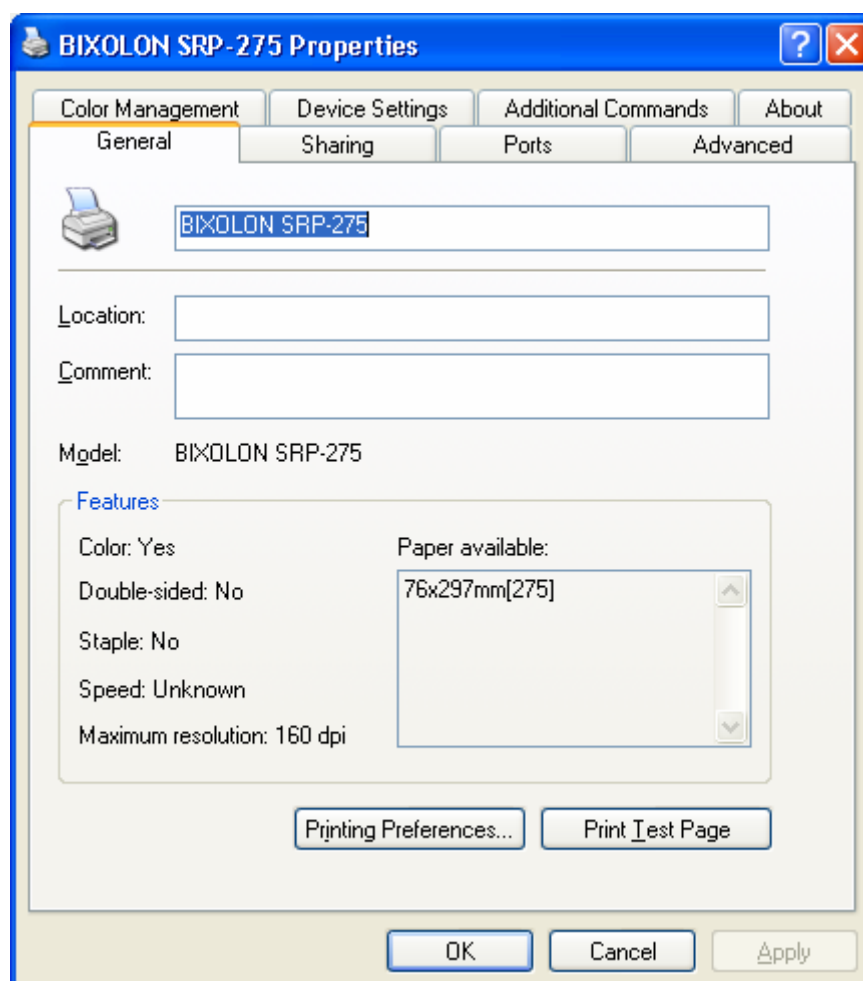
5-1 Paper Supply Method

The printer structure is such that the print head, which carries out printing, and the cutter, which cuts the printing paper, are separated. After printing, the location of the end section can be adjusted as follows.

- Automatically Select: Select the "Receipt" automatically.
- Receipt: Printed text is transferred up to the cutter (manual cutter).
- Receipt [No feed]: Printed text is transferred up to the next line only.
(minimum transfer: 0x0A).
- Form: For long print jobs, printed text is transferred according to the Receipt option per selected paper size.

Detailed setting can be done as follows.

- 1) Open the printer properties window in the Windows OS.



2) Click the "Printing Preferences" button in the "General" tab.
The button name varies by Windows OS. Refer to the following.

- Windows XP/2003 Server: "Printing Preferences"
- Windows VISTA: "Printing Preferences"

3) Select the desired setting in the "Paper/Quality" tab.
(Resolution is fixed at 160 × 72.)

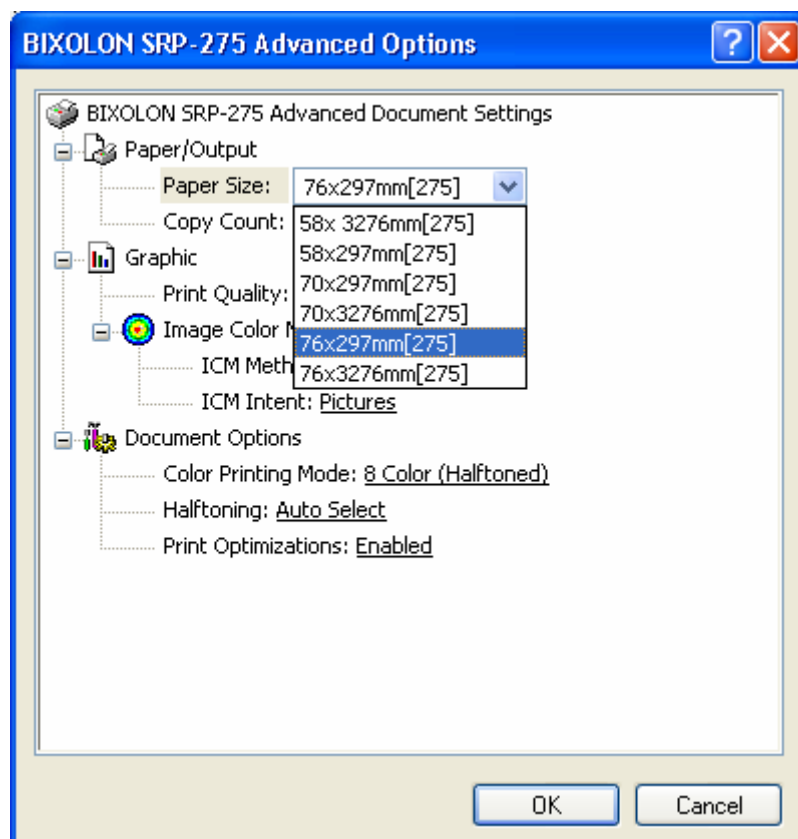
5-2 Paper Size

The paper sizes available in the Windows Driver are as follows.

- 76 × 3276 mm[275]
- 70 × 3276 mm[275]
- 58 × 3276 mm[275]
- 76 × 297 mm[275]
- 70 × 297 mm[275]
- 58 × 297 mm[275]

Detailed setting can be done as follows.

- 1) Open the printer properties window in the Windows OS.
- 2) Click the "Printing Preferences" button in the "General" tab.
The button name varies by Windows OS. Refer to the following.
 - Windows 95/98/ME: "Properties"
 - Windows NT4.0: "Document Defaults"
 - Windows 2000/XP/2003 Server: "Printing Preferences"
 - Windows WEPOS/VISTA: "Printing Preferences"
- 3) Select the "Paper/Quality" tab, and click the "Advanced" button.
Select the desired setting.



5-3 Additional Commands

The Windows Driver serves to receive the content for print from an application and send it to the printer. The Additional Commands function allows for the addition of desired commands at the beginning or end of the print content sent to the printer.

To use the Additional Commands in Windows Vista, the following OS options must be set.

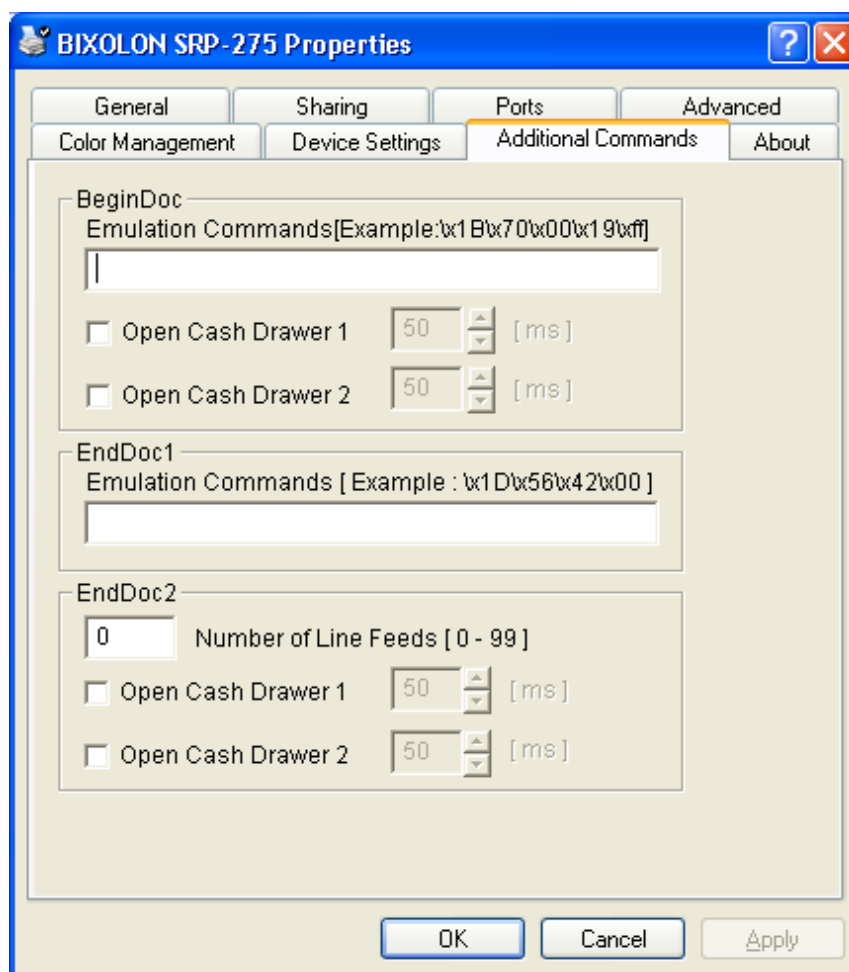
“Control Panel → User Accounts → Uncheck the “Use User Account Control (UAC) to help protect your computer” checkbox under “Turn User Account Control On or Off”.

The command functions available are as follows.

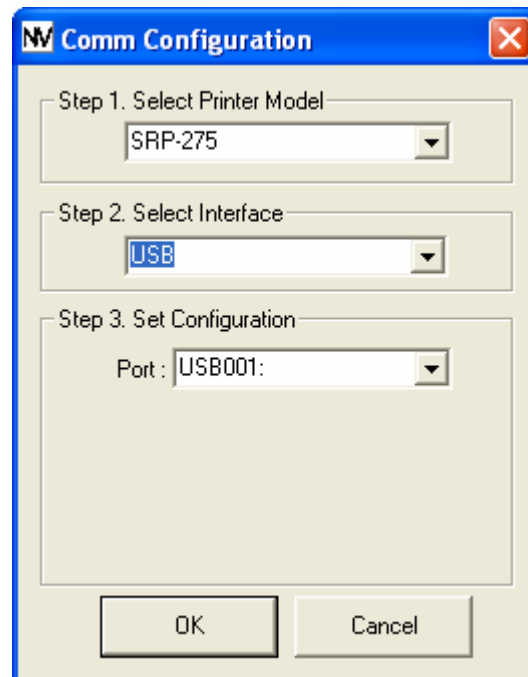
- BeginDoc: addition of command at the beginning of the print content
- EndDoc1: addition of command at the end of the print content
- EndDoc2: addition of line feeding at the end of the print content

Detailed setting can be done as follows.

- 1) Open the printer properties window in the Windows OS.
- 2) Click the "Additional Commands" tab.



- 3) If the user wishes to open Cash Drawer 1 prior to printing, enter “\x1B\x70\x00\x19\xff” in the “BeginDoc” space and click the “OK” button.
- 4) If the user wishes to open Cash Drawer 1 at the end of printing, enter “\x1B\x70\x00\x19\xff” in the “EndDoc1” space and click the “OK” button.
- 5) If the user wishes to feed three lines at the end of printing, enter “3” in the “EndDoc2” space and click the “OK” button.
- 6) When downloading an image to the printer using the NV Image Tool, the image print command is different.



- SRP-275
Command: FS p n m (Hex: 1C 70 m n)

For more information on the hexadecimals that can be entered in “BeginDoc” and “EndDoc1”, refer to the Control Commands Manual.

6. Windows Driver Specifications

6-1 Fonts

The Windows Driver of the printer supports the fonts listed below.

Printing is done at faster speed when using the fonts below as opposed to the Windows fonts of the OS.

Printer Fonts			Character size(dot)	Sizes (point)
FontA1x1	FontA1x1[Ext.]	FontA1x1[255]	FontA1x1(9x9)	9
FontA1x2	FontA1x2[Ext.]	FontA1x2[255]	FontA1x2(9x18)	18
FontA2x1	FontA2x1[Ext.]	FontA2x1[255]	FontA2x1(18x9)	9
FontA2x2	FontA2x2[Ext.]	FontA2x2[255]	FontA2x2(18x18)	18
FontB1x1	FontB1x1[Ext.]	FontB1x1[255]	FontB1x1(7x9)	9
FontB1x2	FontB1x2[Ext.]	FontB1x2[255]	FontB1x2(7x18)	18
FontB2x1	FontB2x1[Ext.]	FontB2x1[255]	FontB2x1(14x9)	9
FontB2x2	FontB2x2[Ext.]	FontB2x2[255]	FontB2x2(14x18)	18

Printer Fonts are defined as follows.

1) FontA1x2

- ANSI Character code support (Code Page 16: 1252)
- Character size (dot): 12 x 24 (double height)
- Sizes (point): 17

2) FontA1x2[Ext]

- IBM expansion Character code support (Code Page 0: 437)
- Character size (dot): 12 x 24 (double height)
- Sizes (point): 17

3) FontA1x2[255]

- Buyer exclusive code support (Code Page 255)
- Character size (dot): 12 x 24 (double height)
- Sizes (point): 17

6-2 Special Functions

The Windows Driver supports the special functions indicated below.
These special functions are available when using the characters after the “FontControl” font is selected.

This function is not an ordinary character printing function. Take special care.

Character	Special Function	Note
5	HT is output	
6	LF is output	
7	CR is output	
a	Open Drawer 2 (50ms drive pulse width)	
b	Open Drawer 2 (100ms drive pulse width)	
c	Open Drawer 2 (150ms drive pulse width)	
d	Open Drawer 2 (200ms drive pulse width)	
e	Open Drawer 2 (250ms drive pulse width)	
g	Cut Receipt (partial cut) without paper feeding	
w	Text is aligned left	
x	Text is centered	
y	Text is aligned right	
A	Open Drawer 1 (50ms drive pulse width)	
B	Open Drawer 1 (100ms drive pulse width)	
C	Open Drawer 1 (150ms drive pulse width)	
D	Open Drawer 1 (200ms drive pulse width)	
E	Open Drawer 1 (250ms drive pulse width)	
G	Print NV 1 st image	
H	Print NV 2 nd image	
I	Print NV 3 rd image	
J	Print NV 4 th image	
K	Print NV 5 th image	
P	Cut Receipt (partial cut)	

1) Sample Use

If the “FontControl” font is selected and 6 is entered, the “LF” (Line Feeding) operation is activated.

(does not entail the printing of the character “6”)

2) “FontControl” Font Function

Printer font for special function	Function	Size(pont/dot)
FontControl	<ul style="list-style-type: none"> - Open Drawer 1/2 - Cut receipt - Cut receipt(without paper feeding) - Justification(Left/Center/Right) - Output HT,Output LF, Output CR - Print NV image 	(9 / 9x9)

7. Use of Windows Driver

7-1 Use of Visual Basic

This section explains the use of the Windows Driver with Visual Basic to control the printer (SRP-275).

Sample programs are saved together if the Windows Driver is installed. Take note.

7-1-1 Windows Driver Selection

The following code is an example of the selection of the “BIXOLON SRP-275” Windows Driver.

```
For Each prnPrinter In Printers
    If prnPrinter.DeviceName = "BIXOLON SRP-275" Then
        Set Printer = prnPrinter
    Exit For
End If
Next
```

7-1-2 Test Printing

The following code is an example of the printing of Arial Test via the Windows font, and FontA1x1Test via the printer font.

```
'Print in Windows font
Printer.FontSize = 9
Printer.FontName = "Arial"
Printer.Print "Arial Test"

'Print in printer font
Printer.FontSize = 9
Printer.FontName = "FontA1x1"
Printer.Print "FontA1x1Test"

Printer.EndDoc
```

7-2 Use of Wordpad

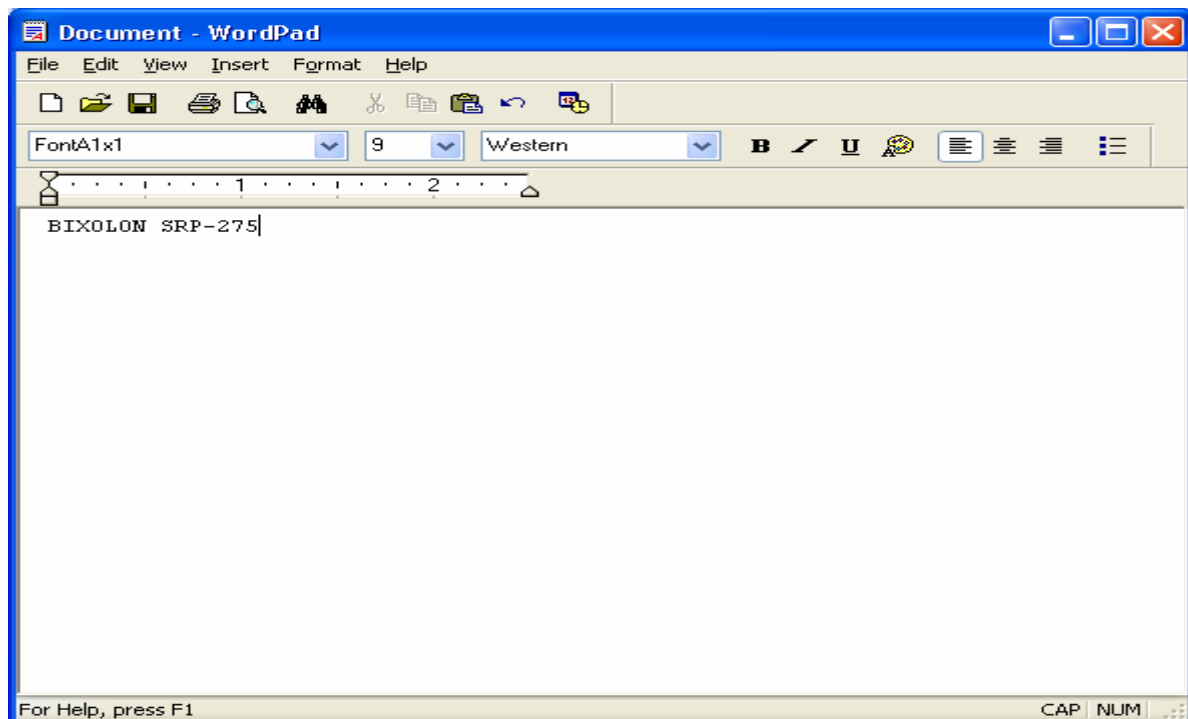
7-2-1 Wordpad Environment Settings

After running Wordpad and setting the following conditions, conduct a test.

- Select Printer
After selecting "Print" from the "File" tab, select the printer (BIXOLON SRP-275).
- Select Paper Size, Orientation, and Margins
After selecting "Page Settings" from the "File" tab, select the paper size, orientation, and margins.

7-2-2 Text Printing

Use the Windows Driver of the printer to run a test.



- 1) Select the desired font from the Font menu (FontA 1x1).
- 2) Select the desired font size (9).
- 3) Enter the text to be printed in Wordpad.
- 4) Click the Print button in the toolbar to print.